

**AN ECONOMIC ACTOR THAT REPRESENTS MORE THAN 900,000 ENTERPRISES AND ORGANISATIONS, MORE THAN 8 MILLION JOBS AND MORE THAN 100 MILLION PEOPLE LINKED TO IT IN ALGERIA, EGYPT, FRANCE, ITALY, MOROCCO, PORTUGAL, SPAIN, TUNISIA AND TURKEY**

Social Economy is present in all the countries of the Union for the Mediterranean. Its enterprises and institutions come in all sizes, from micro-enterprises to large industry leaders, active in all economic industries following a series of principles and values:

- The primacy of the individual and the social objective over capital
- Voluntary and open membership
- Democratic spirit of organisation
- The combination of the interests of members/users and/or the general interest
- The defence and application of the principle of solidarity and responsibility
- Autonomous management and independence from public authorities
- The essential surpluses is used to carry out sustainable development objectives, services of interest to members or of general interest

COOPERATIVES, MUTUAL SOCIETIES, DEVELOPMENT ASSOCIATIONS, FOUNDATIONS, SOCIAL ENTERPRISES and OTHER INSTITUTIONS sharing these values and carrying out an economic activity are examples of this different form of enterprise.

**ADDED VALUE OF SOCIAL ECONOMY IN THE MEDITERRANEAN**

The Institutions in charge of Euro-Mediterranean cooperation have elaborated a number of documents that highlight the role that Social Economy plays in the social and economic development of the Mediterranean:

**ECONOMIC GROWTH AND EMPLOYMENT**

*2014. Declaration of the Euro-Mediterranean Summit of Economic and Social Councils and similar institutions. Nicosia (Cyprus).*  
“(The participants) recognise the role that the social economy can play in fostering economic growth, eradicating poverty, building up sustainable local development, and improving labour market access and decent working conditions especially for women and young people, as well as for various categories of disadvantaged workers;

**YOUNG PEOPLE**

*2014. Document “The economic and social situation of young people in the Euro-Mediterranean region”. European Economic and Social Committee.*  
“Rising unemployment around the Mediterranean and poor employment prospects are shared problems which need to be addressed through closer regional cooperation, a long-term strategy to harness the potential of the young people of the region, and a radical change of culture and values in support of joint initiatives and the social economy”.

**ENTREPRENEURSHIP**

*2013. Report: “Young people and employment in the Euro-Mediterranean region” by the ESCs of Spain, Jordan, Morocco, Greece, France and Lebanon with the European Economic and Social Committee.*  
“Social economy solutions may contribute to the development of entrepreneurship and the creation of productive fabric, especially in rural areas and in areas which are less attractive to foreign investment; these solutions also allow the progressive creation of association networks for the provision of social services, thus also contributing to attaching people to the area and, ultimately, to local development”.

**SOCIAL COHESION AND JOB CREATION**

*2011. Report on “Promotion of entrepreneurship, innovation and creativity in the EuroMediterranean region” by the ESCs of Spain, Algeria, Italy, Jordan, Palestine, Tunisia and the Turkish delegation of the Joint EU-Turkey Consultative Committee.*  
“Enterprises in the social economy (cooperatives, benefit societies, development associations, foundations and other types of enterprise involving worker participation) also play an important role in the development of business activity in these countries, because they contribute to social cohesion, the promotion of entrepreneurship, the creation of wealth on a local level, the promotion of better governance, sustainable development and, especially, job creation”.

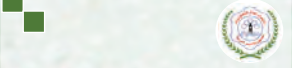
**RURAL DEVELOPMENT**

*2011. Document «Rural development and employment in the Euro-Mediterranean region». European Economic and Social Council together with the ESCs of Spain, Italy, Algeria, Jordan and the Turkish Delegation of the Joint EU-Turkey Consultative Committee.*  
“Social economy enterprises, and the cooperative sector in particular, can play a strategic role in the rural setting, by stimulating fresh awareness in terms of a less individual and more collective associative approach against a new social backdrop”.

**MEMBERS of the ESMED NETWORK**

**FULL MEMBERS**

**• EGYPT**



■ **GENERAL CO-OPERATIVE UNION OF ARAB REPUBLIC OF EGYPT**  
**Contact information:**  
Building No.26 26 July street,  
Lebanon square,  
Al-Mohandesen El Cairo  
Tel. 201.223.17.24.56  
mafattah@rocketmail.com

**• SPAIN**



■ **CEPES: Confederación Empresarial Española de la Economía Social**  
**Contact information:** Calle Virgen de los Peligros 3, 4º. 28013 Madrid  
Tel. 34. 91.593.04.12  
www.cep.es  
info@cep.es

**• FRANCE**



■ **ESS France: Chambre Française de l'Économie Sociale et Solidaire**  
**Contact information:** 37, Rue Jean Leclaire – 75017 Paris  
Tel. +33.1.53.31.39.80  
www.ess-france.org  
e.verny@ess-france.org  
contact@ess-france.org

**• ITALY**



■ **CONFCOOPERATIVE: Confederazione Cooperative Italiane**  
**Contact information:** Borgo Santo Spirito 78 – 00193 Rome  
Tel. 39. 06.68.00.01  
www.confcooperative.it  
confcooperative@confcooperative.it  
esteri@confcooperative.it  
bruxelles@confcooperative.coop



■ **LEGACOOP: Lega Nazionale delle Cooperative e Mutue**  
**Contact information:** Via Guattani 9 00161 Rome  
Tel. 39.06.84.43.91  
www.legacoop.coop/  
presidenza@legacoop.coop  
esteri@legacoop.coop  
bruxelles@legacoop.be

**• MOROCCO**



■ **ODCO: Office de Développement de la Coopération**  
**Contact information:** 13, Rue Dayet Aoua BP 1297 Rabat, Agdal, 10000  
Tel. 212.537.771.033  
www.odco.gov.ma/index.php?lang=fr  
odco@odco.gov.ma



■ **UNCAM: Union Nationale des Coopératives Agricoles Marocaines**  
**Contact information:** 360 Route de l'Oasis, Casablanca  
Tel. 212.522.99.27.80  
Alaoui29ma@yahoo.fr



■ **REMESS: Réseau Marocain de l'Économie Sociale et Solidaire**  
**Contact information:** Résidence Salwa 21, Immeuble 3, 2ème Etage, Appartement 4, Avenue Mohammed V, Tabriquet - Salé - Morocco  
Tel. (212) 5 37 85 64 97  
www.remess.ma  
remess07@gmail.com

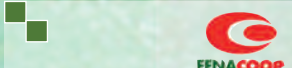
**• PORTUGAL**



■ **CASES: Cooperativa António Sérgio para a Economia Social**  
**Contact information:** Rua Víriato, n.º 7, 1050-233 Lisbon  
Tel. 351.213.87.80.46./7  
www.cases.pt  
cases@cases.pt



■ **CONFECOOP: Confederação Cooperativa Portuguesa**  
**Contact information:** Avenida Santos Dumont, 57 - 2º Esq. 1050-202 Lisbon  
Tel. 351.213.87.80.46./7  
www.confe.coop/  
confecoop@mail.telepac.pt

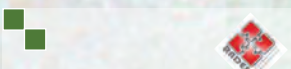


■ **FENACOOP: Federação Nacional das Cooperativas de Consumo**  
**Contact information:** Av. Santos Dumont, 57, 2º. Esq PT- 1050-202 Lisbon  
Tel. 351.218.12.35.25  
www.consumo-pt.coop/  
fenacoop@consumo-pt.coop

**• TUNISIA**



■ **UNAM: Union Nationale des Mutuelles de Tunisie**  
**Contact information:** 11 Avenue Mounastir-1er etage- Bab Saadoun 1005- Tunis  
Tel. 216.71.572.098  
Fax. 216.71.573.971  
contact@mutuelledelasante.tn



■ **RADES: Réseau des Associations de l'Economie Sociale**  
**Contact information:** 52, avenue Habib Bourguiba, 2000, Le Bardo. Tunisia  
Tel. 216.98.34.14.75  
www.facebook.com/Reseau.RADES/  
reseau.rades@topnet.tn

**• TURKEY**



■ **NCUT: National Cooperative Union of Turkey**  
**Contact information:** Nilgun Sokak No. 14/6 Cankaya 06690 Ankara, Turkey  
Tel. 90.312.425.95.23  
90.312.419.31.97  
www.turkey.coop  
tmkb@turkey.coop  
tmkb@tmkb.org.tr

**ASSOCIATE MEMBERS:**

■ **C.C.M: Comité de Coordination des Mutuelles (ALGERIA)**  
**Contact information:** 37, Rue Mohamed Allilat. Kouba, Algiers  
mut.harmat@yahoo.fr

■ **MedESS Association**  
**Contact information:** 17 Place Etienne Pernet – 75015 Paris  
info@medess.org  
http://medess.org/

**SECRETARIAT OF THE ESMED NETWORK:**

■ **Contact information:** Calle Virgen de los Peligros 3, 4º 28013 Madrid  
Tel. 34. 91.593.04.12  
euromed@cep.es

**The Euro-Mediterranean Network of Social Economy (ESMED)**

**Social Economy IN THE MEDITERRANEAN**



# THE EURO-MEDITERRANEAN NETWORK of SOCIAL ECONOMY (ESMED)

The ESMED Network is the institutional reference platform for Social Economy in the Mediterranean region. Members of this Network are main representative organisations of Social Economy in 9 countries from both sides of the Mediterranean.

The ESMED Network was born in October 2000 in Madrid. The Network acts as coordination platform to promote and strengthen Social Economy enterprises and

organisations in the Mediterranean basin. It also works to influence Euro-Mediterranean policies in order to encourage this entrepreneurial model, which responds to challenges such as job creation and maintaining of employment, local development, social cohesion and equal opportunities.

The intense activity carried out by the ESMED Network before the European and Euro-Mediterranean Institutions and its

increasing membership has made it an institutional reference for Social Economy in the Mediterranean

The ESMED Network has a constant dialogue with the European Institutions and the Union for the Mediterranean (UfM), which is the international organisation that promotes political, economy and social cooperation in the region covered by the 28 EU Member states and 15 Mediterranean countries.

## OBJECTIVES of the ESMED NETWORK

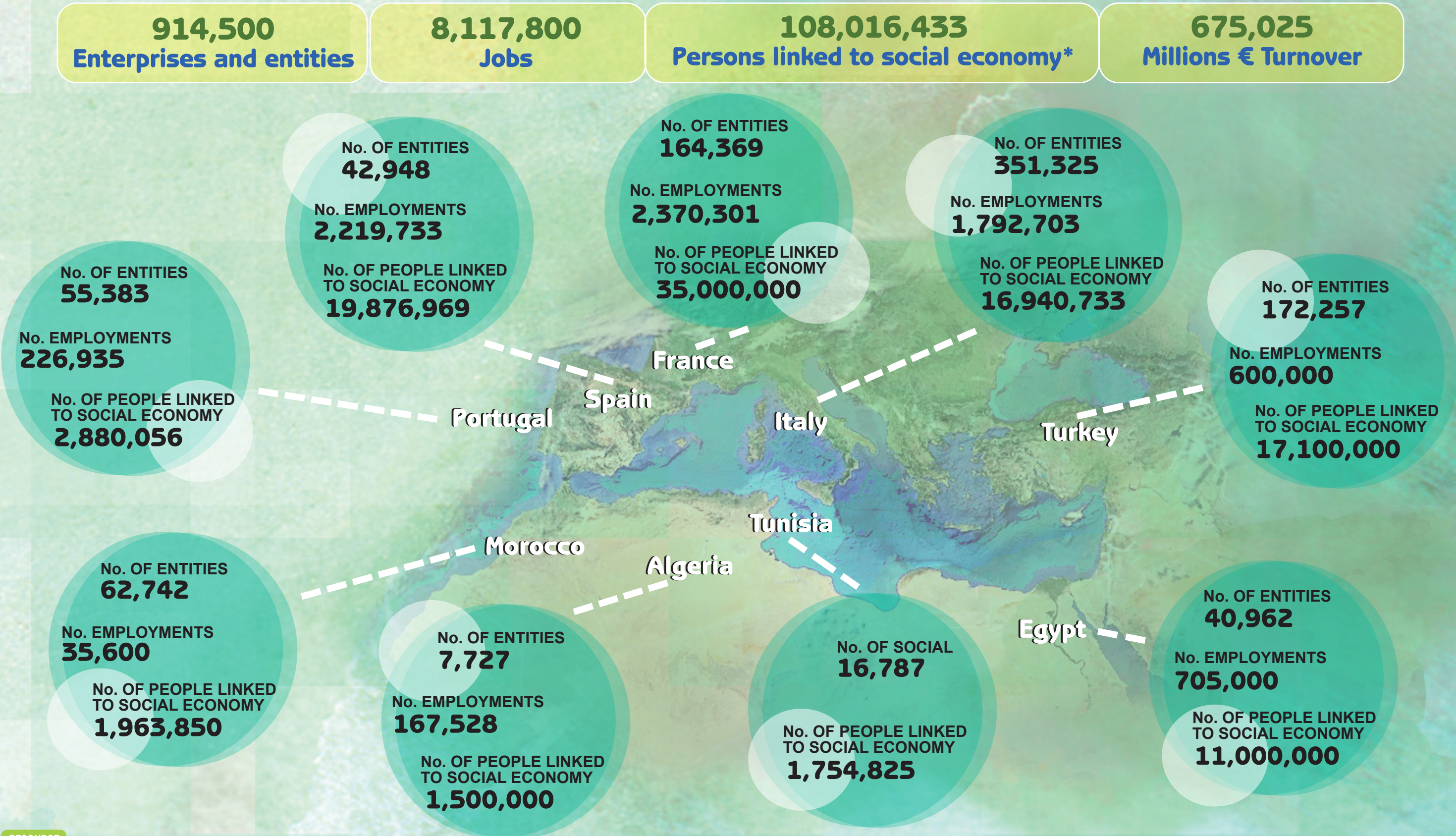
1. Foster collaboration and cooperation between the representative organisations of Social Economy in the countries participating in the Union for the Mediterranean.
2. Increase awareness and institutional acknowledgement of Social Economy as an economic and social actor in the Euro-Mediterranean Partnership.
3. Facilitate dissemination and exchange of experiences and information between the Network's members.

## FUTURE CHALLENGES for the ESMED NETWORK

1. Increase Social Economy's participation and involvement in Euro-Mediterranean programmes and projects, with the aim to:
2. Build a general Euro-Mediterranean cooperation framework to which civil society can contribute.
- Strengthen the management capabilities of Social Economy enterprises and their production processes by means of skilling and training programmes for entrepreneurs.
  - Contribute to the establishment of legal frameworks that acknowledge and foster the creation and management of Social Economy enterprises and organisations.
  - Increase access of Social Economy enterprises and organisations to financial resources.
  - Improve support and advice services for Social Economy enterprises.
  - Contribute to the coordination of the Public Departments in charge of promoting Social Economy and its enterprises to generate policies that foster this other form of entrepreneurship.
- For the ESMED Network, the Euro-Mediterranean partnership must be based on mutual understanding and peaceful dialogue as the two necessary conditions for sustainable development in the region. The ESMED Network is committed to strengthening cooperation and dialogue in the Union for the Mediterranean, between states and civil society organisations, towards building an area of shared prosperity in the Mediterranean.

The ESMED Network aims to consolidate a setting where Social Economy's representative organisations can participate and consult each other, allowing them to contribute their proposals to the decision-making forums set up by the Union for the Mediterranean.

## THE NETWORK'S ECONOMIC FIGURES



### RESOURCE

#### NUMBER OF SOCIAL ECONOMY ENTITIES

- Data Spain: 2014. CEPES  
- Data Italy: 2011 ISTAT  
- Data France: 2013. Panorama de l'Économie Sociale et Solidaire. CNCREs 2015 Chambre Française de l'Économie Sociale et Solidaire.  
- Data for Portugal: 2010. CASES (Satellite Account of Social Economy). (i) The other legal forms of SE are The Misericórdias - specificity of Portugal  
- Data Morocco: Cooperatives, source ODCo 2013. Associations and mutual benefit societies, source "L'Économie Sociale et Solidaire au Maghreb: Quelles réalités pour quel avenir? Algérie, Maroc, Tunisie", IPEMED 2013  
- Data Tunisia: 2014 Union Nationale des Mutuelles  
- Data Algeria: Mutual Benefit Societies, source CCM 2010. Associations and cooperatives, source "L'Économie Sociale et Solidaire au Maghreb: Quelles réalités pour quel avenir? Algérie, Maroc, Tunisie" IPEMED 2013  
- Data Egypt: Source National Union of Egyptian Cooperatives, 2013  
- Data Turkey: Source National Union of Turkish Cooperatives, 2009

#### N° EMPLOYMENTS IN SOCIAL ECONOMY ENTITIES

- Data Spain: 2014. CEPES  
- Data Italy: 2011 ISTAT  
- Data France: 2013. Panorama de l'Économie Sociale et Solidaire. CNCREs 2015  
- Data for Portugal: 2010. CASES (Satellite Account of Social Economy). (i) The other legal forms of SE are The Misericórdias - specificity of Portugal  
- Data for Morocco: Only for cooperatives. ODCo, 2013  
- Data Algeria: Mutual Benefit Societies, source CCM 2010. Associations and cooperatives, source "L'Économie Sociale et Solidaire au Maghreb: Quelles réalités pour quel avenir? Algérie, Maroc, Tunisie" IPEMED 2013  
- Data Egypt: Source National Union of Egyptian Cooperatives. 2013  
- Data Turkey: Source National Union of Turkish Cooperatives, 2009

#### NUMBER OF PEOPLE LINKED TO SOCIAL ECONOMY

- Data Spain: 2014. CEPES  
- Data Italy: ISTAT 2013 & ITALIAN COOPERATIVE ALLIANCE. Individual members affiliated to Confcooperative&Legacoop and 4,716,254 volunteers involved in the other legal forms of Social Economy  
- Data France: 2014 Chambre Française de l'Économie Sociale et Solidaire  
- Data for Portugal: 2010. CASES  
- Data Morocco: Cooperatives, source ODCo, 2013. Mutual benefit societies, source "L'Économie Sociale et Solidaire au Maghreb: Quelles réalités pour quel avenir? Algérie, Maroc, Tunisie" IPEMED 2013  
- Data Tunisia: Source Union Nationale des Mutuelles 2014  
- Data Algeria: Data Mutual Benefit Societies, source CCM 2010. Associations and cooperatives, source "L'Économie Sociale et Solidaire au Maghreb: Quelles réalités pour quel avenir? Algérie, Maroc, Tunisie" IPEMED 2013  
- Data Egypt: Source National Union of Egyptian Cooperatives. 2013  
- Data Turkey: Source National Union of Turkish Cooperatives, 2009

\* Note: Figures show number of people linked to a social economy entity. It might be possible that one person is linked to several entities.